



**GOLDEN MANSION**

**A NEW BENCHMARK FOR GOLDEN LIVING**



**GOLDEN MANSION**  
**DEDICATED TO THE WEALTH LEGEND OF A CITY!**

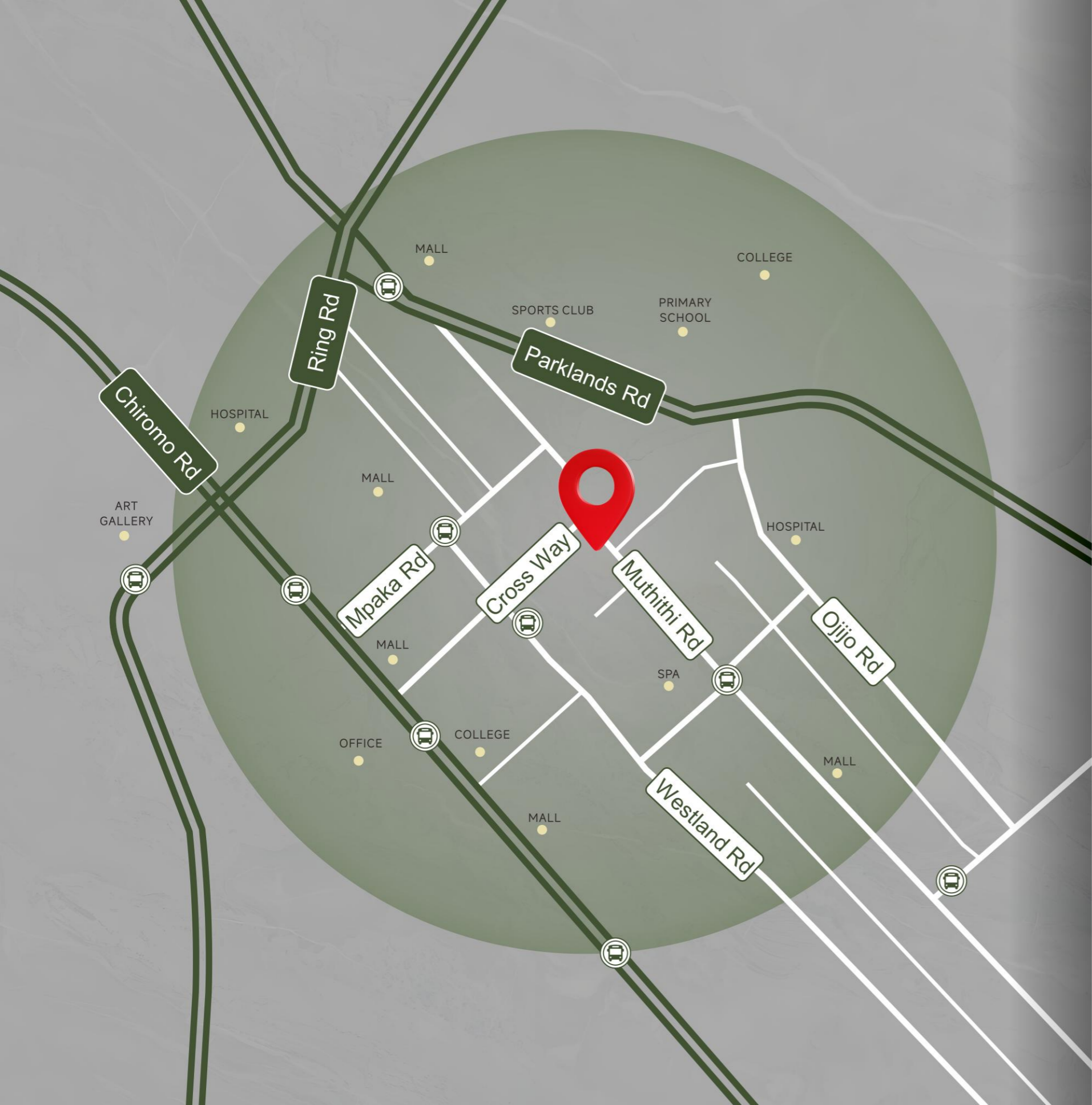
Located in the heart of Nairobi's bustling business district, this boutique residence blends prime location, modern luxury, and lasting investment value to create an exclusive community for high-net-worth individuals, international executives, and discerning investors where you can thrive in the city's hustle and return to true tranquility.



# GOLDEN MANSION

Located at the center of Nairobi's vibrant business scene, Summit Vista introduces a boutique residence designed for those who demand more. With fine craftsmanship, international living standards, and a full suite of premium amenities, Golden Mansion offers the perfect balance of energy and tranquility, creating an exclusive community and a timeless home where luxury and comfort meet.





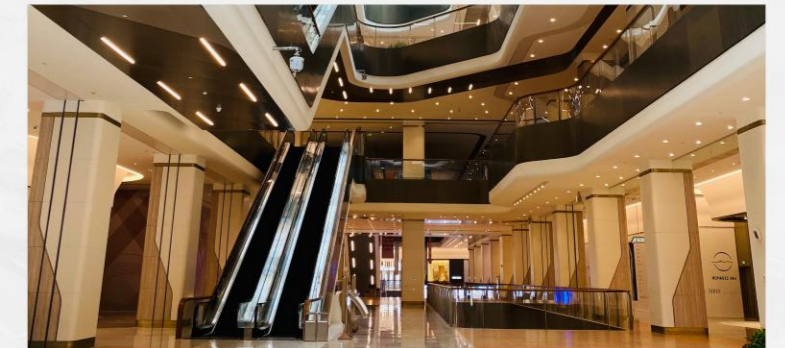
Golden Mansion is located in the heart of Westlands in Nairobi, close to East Africa's top business cluster, and is a rare plot where "business + living" cores converge.

As Nairobi's prime business hub, the area is home to high-end office buildings, luxury hotels and international amenities. It is the preferred residential area for foreign executives and multinational company personnel, with strong rental demand and significant potential for asset appreciation.

## THE CITY'S PROSPERITY IS WITHIN REACH

10-minute golden living circle

GTC Mall	2 minutes
JW Marriott	2 minutes
Carrefour Market	2 minutes
Java House-Orbit Place	2 minutes
Nairobi Institute of Technology (N.I.T)	2 minutes
Sarit Centre	3 minutes
Broadwalk Mall	3 minutes
Villa Rosa Kempinski	3 minutes
MP Shah Hospital	3 minutes
Nairobi Expressway	3 minutes
Westgate Mall	5 minutes
National Museums Of Kenya	5 minutes
Parklands Sports Club	5 minutes
Aga Khan University Hospital	8 minutes



# GOLDEN MANSION IS CRAFTED WITH PASSION FOR YOU HIGH-END CASUAL · ALL YOU NEED

- ☑ **Leisure & Health:** Rooftop heated infinity pool, rooftop garden, rooftop restaurant, golf putting green, gym, shower & sauna rooms, clubhouse, lobby bar, café, children's play area, laundry drying area.
- ☑ **Daily Service:** convenience mini - store.



# SAFETY ASSURANCE · WHOLEHEARTED PROTECTION

At Golden Mansion, your peace of mind comes first; every detail is built for security, convenience, and uninterrupted comfort.

- ☑ **24-hour security:** Full CCTV coverage, electronic fencing, smart access control, and staffed entrance for maximum protection.
- ☑ **Convenient facilities:** Five-story parking garage, six high-speed elevators to minimize waiting times.
- ☑ **Uninterrupted resources:** 24 hours Backup generator, large-capacity water tank.





## GOLDEN MANSION STAR-RATED UNIT

### ☑ PROPERTY TYPE

High-end boutique residences with 1 - 3 bedroom layouts. Modern minimalist + top luxury architecture, offering abundant natural light and views.

### ☑ DELIVERY STANDARD

Fully - furnished turnkey homes, equipped with first - tier brand kitchen appliances and premium water heaters.



**GOLDEN  
MANSION**

**A1** Unit ▶  
78.46 SQM 844.54 SQFT

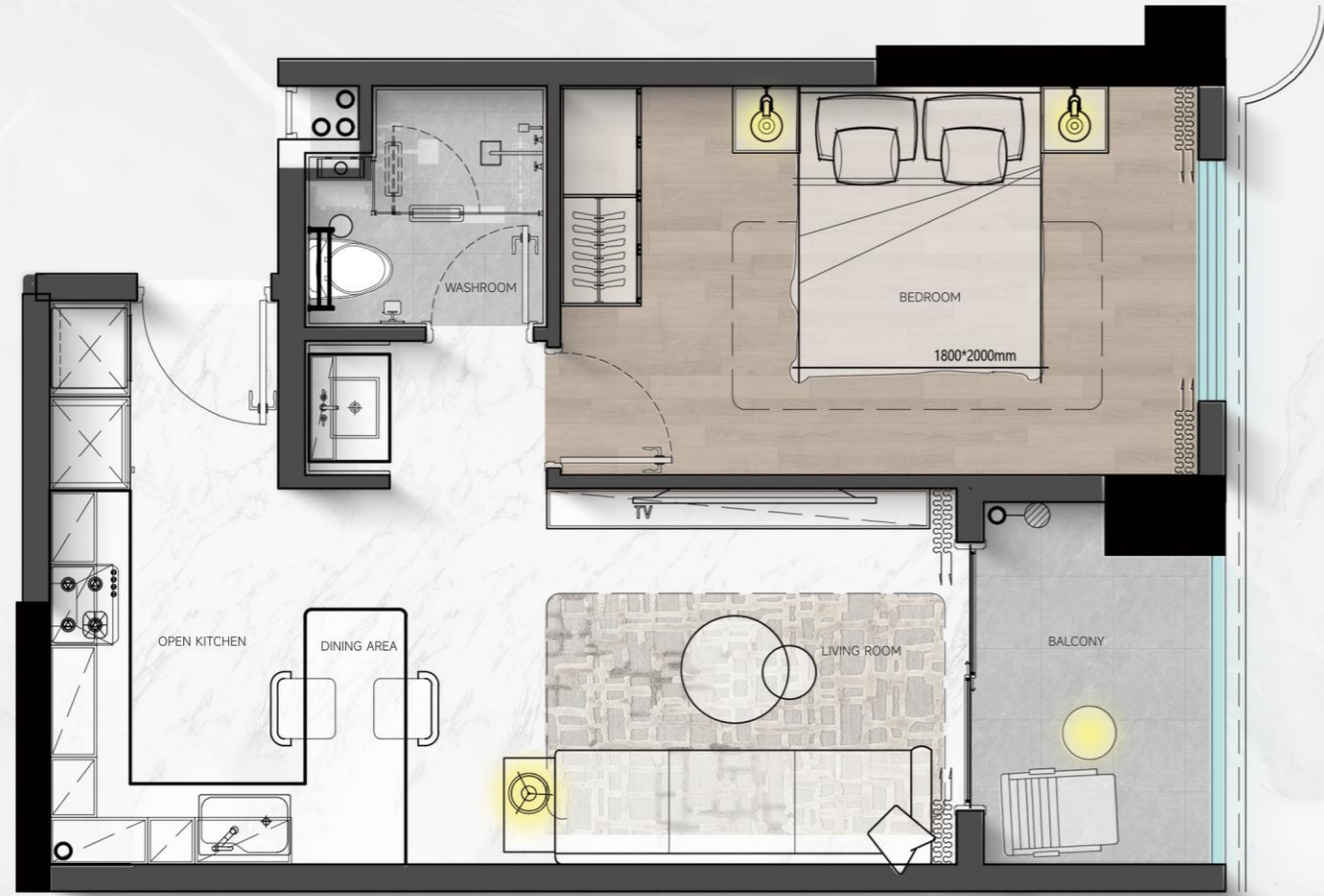
**1 BEDROOM · A1 UNIT**



Spacious and open, suitable for self-living, rentals, meeting light social needs.

**A2** Unit ▶  
64.4 SQM 693.2 SQFT

### 1 BEDROOM · A2 UNIT



Bright and airy, with clear zoning, it is suitable for successful individuals who have certain requirements for the living scale.

**A3** Unit ▶  
107.57 SQM 1157.87 SQFT

### 2 BEDROOMS · A3 UNIT



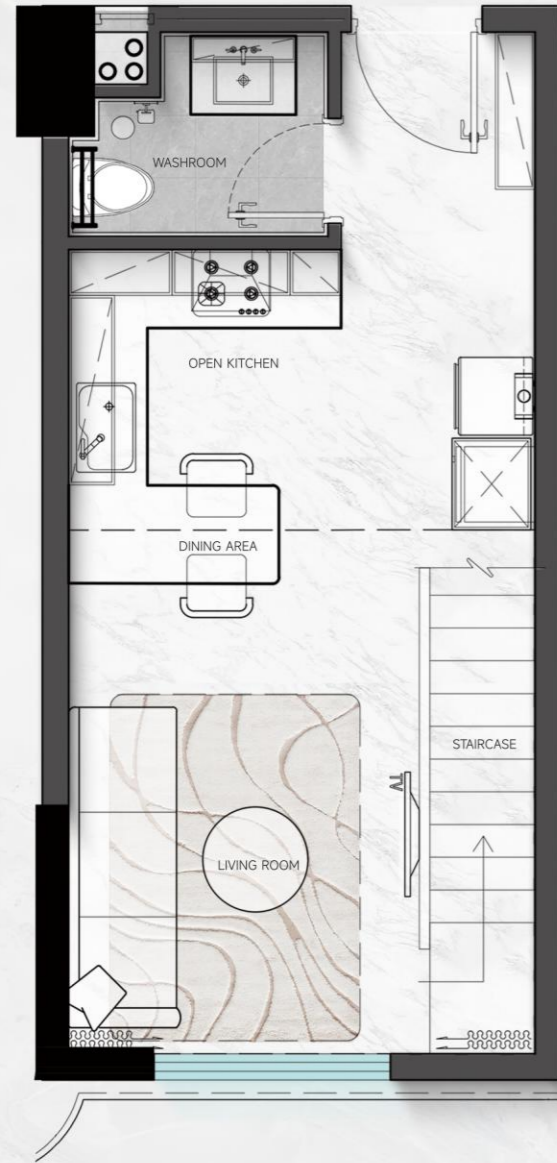
With its spacious layout and distinct functional zoning, this residence is ideally suited for accommodating a family of three or tenants seeking a two-bedroom configuration.



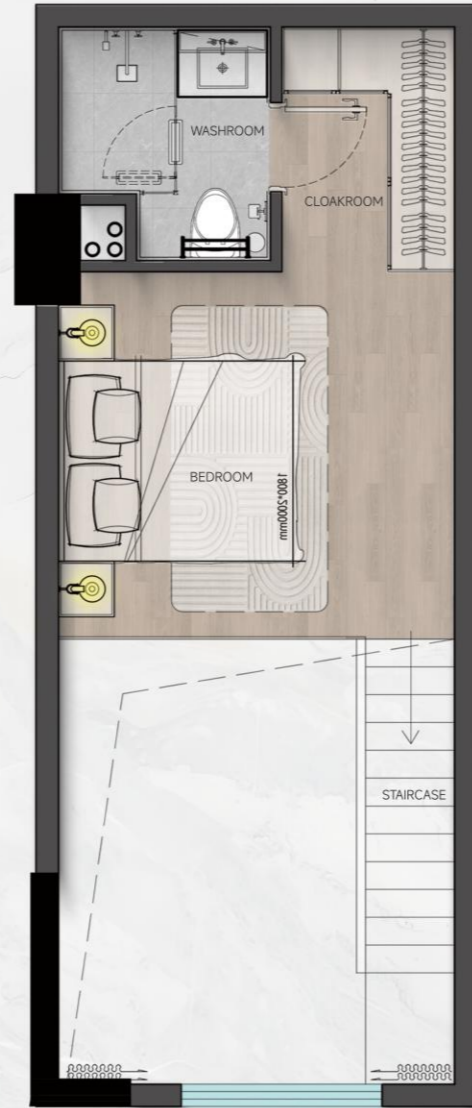
# GOLDEN MANSION

**L1** Duplex ▸  
66.87 SQM 719.78 SQFT

## 1-BEDROOM · L1 DUPLEX



▸ GROUND FLOOR



▸ THE SECOND LAYER

Featuring vertically stratified spatial design and independently operating functional zones, this residence is optimally tailored for young professionals pursuing personalized living experiences.

**L2** Duplex ▸  
91.53 SQM 985.22 SQFT

## 1-BEDROOM · L2 DUPLEX

▸ GROUND FLOOR



▸ THE SECOND LAYER



Employing reinforced dynamic-static zoning alongside advanced daylighting-ventilation optimization protocols, the spatial configuration demonstrates particular compatibility with stylistically conscious compact family units requiring concurrent accommodation of domestic functionality and low-intensity social interchange potential.

**L3** Duplex ▶  
138 SQM 1485.42 SQFT

## 2 BEDROOMS · L3 DUPLEX



> GROUND FLOOR



> THE SECOND LAYER

Featuring high space utilization and strong connectivity, it is suitable for small families or young people who prefer duplex structures.

**L4** Duplex ▶  
155.1 SQM 1669.48 SQFT

## 3 BEDROOMS · L4 DUPLEX

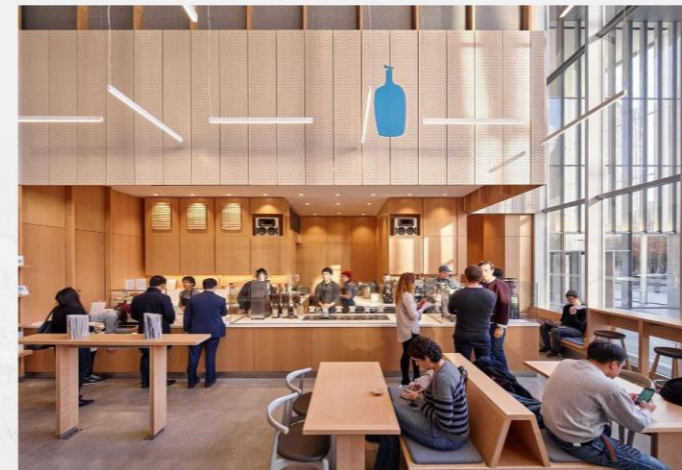


> GROUND FLOOR



> THE SECOND LAYER

The space is generous and offers excellent living comfort, making it ideal for high-end families or rental properties with high space requirements.



In the early morning, swim in the heated swimming pool, accompanied by the morning light and the awakening of the city.

In the afternoon, enjoy coffee in the rooftop garden while overlooking the bustling scene of the commercial cluster.

In the evening, gather with friends in the restaurant. The gentle evening breeze and the lighting create a pleasant atmosphere.

Late at night when you return home, the intelligent access control and security guards ensure a peaceful sleep.

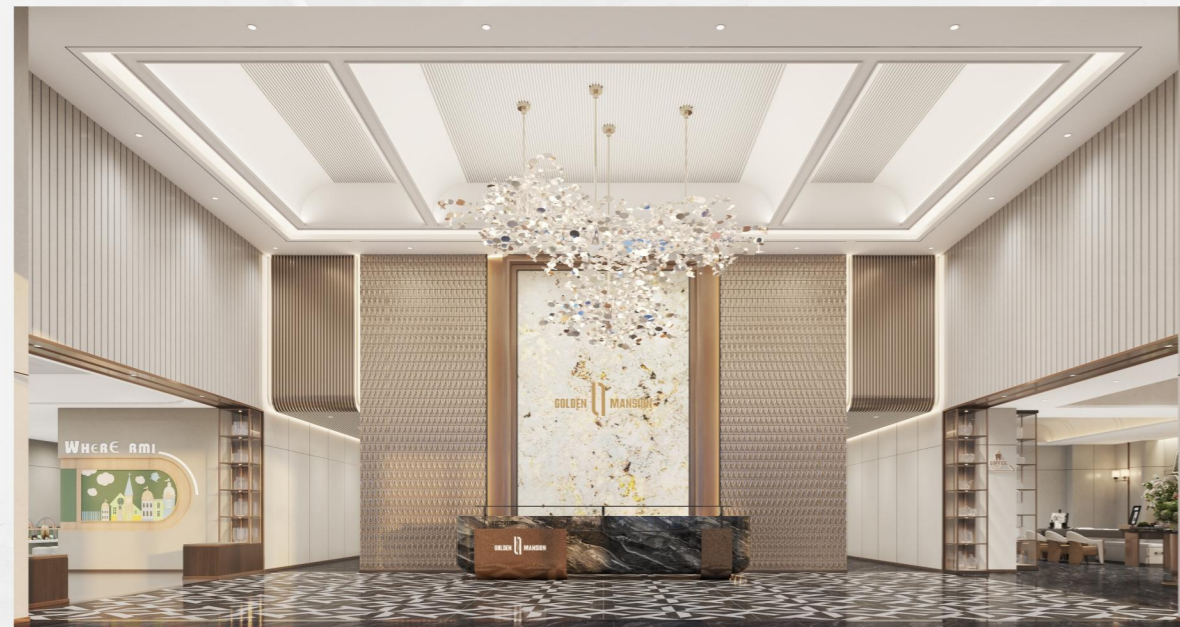
From daily life to social activities, it allows you to immerse yourself in a "luxurious + convenient" living experience 24 hours a day.

# YOUR BEST CHOICE FOR PROPERTY INVESTMENT!

**TARGET CUSTOMERS ARE STABLE AND WORRY-FREE**

**Self-occupied customer group:** Nairobi foreign executives, middle and senior executives of multinational companies, high net worth families with a focus on quality of life, providing convenient living "near business center + full facilities".

**Investors:** International investors, local asset allocators who are interested in the scarcity of the area and high rental returns, suitable for short-term rentals or long-term rental income.



# STRONG MARKET DEMAND, HIGH RETURNS AND STRONG APPRECIATION!

**STRONG INVESTMENT VALUE AT GOLDEN MANSION**

This area offers strong investment potential with high returns. For reference, nearby developments such as GTC Residence, with rental prices as follows:

Elite Residency	1-Bedroom	KSh 180,000–200,000/month
GTC Residence	2-Bedroom	KSh 280,000–300,000/month
	3-Bedroom	KSh 330,000–350,000/month

- Prime location:** In Nairobi's most dynamic business hub, surrounded by multinational companies and international institutions, ensuring high occupancy and guaranteed rental income.
- Stable customer base:** Preferred by foreign executives, multinational employees, and international organization staff with consistent long-term rental demand.
- Value appreciation potential:** Kenya's rising global profile, rapid tourism growth, and foreign investment influx will continue to boost land values, property prices, and rental yields in this core area.

# GOLDEN MANSION

Golden Mansion is developed by Summit Vista, with investment from Beijing Xiangfeng Group—a top-tier Chinese real estate enterprise with 26 years of development experience.

Founded in 1999, Beijing Xiangfeng Group specializes in high-end real estate development. Its diverse portfolio covers residential communities, hotels, serviced apartments, commercial complexes, and tourism projects. The group's team is composed of seasoned real estate professionals and technical experts. Major developments include:

- Beijing, China – Xiangfeng Tower
- Beijing, China – Bai Ling Mansion
- Beijing, China – Chinese Agricultural Science and Technology Cultural Park
- Jiangsu, China – Golden Villa
- Jiangsu, China – Golden Garden
- Jiangsu, China – Jardin Admirable Tourism Estate
- Guangdong, China – Longfu Tower
- Liaoning, China – Apple Mansion

XIANG FENG GROUP CHINA CONTACT:

- TELEPHONE: +86 010-63330989
- ADDRESS: XIANGFENG TOWER, NO. 13 HONGJU STREET, XICHENG DISTRICT, BEIJING, CHINA.



## EXPERIENCED DEVELOPER, TRUSTWORTHY!

In 2025, Summit Vista entered Africa for the first time, choosing Nairobi, Kenya as its starting point. By combining Chinese craftsmanship with international development expertise, it is committed to creating a high-end community that offers "premium living environments + comfortable lifestyle services" for its residents.



📍 Sales Center & Showhouse: 3rd Floor, The Stellato Mall,  
42 Muthithi Road, Westlands, Nairobi

☎ 011 633 5555 / 011 633 7777

✉ Goldenmansion88@163.com

🌐 <https://skypeakkenya.com>



QR CODE

All contents and texts displayed in this brochure are for reference only and do not constitute an offer in the contract. The right of interpretation shall belong to the developer.